

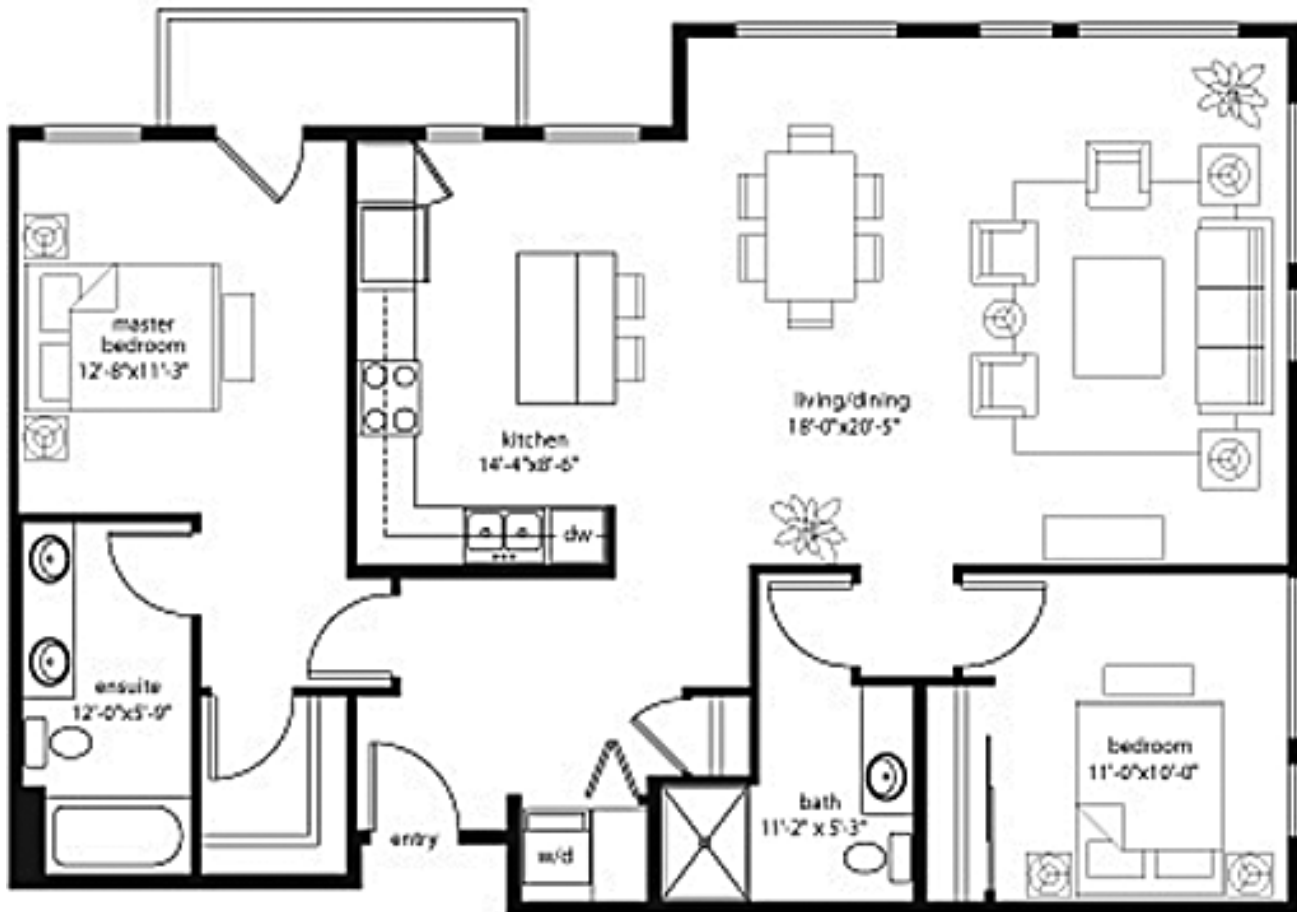
F

New Homes for sale
in the Seattle and
Puget Sound Area

New Homes

SATURDAY

FLOOR PLAN OF THE WEEK | brix



At Home 324 at Brix, the generous living spaces boast a 10-foot ceiling and expansive windows overlooking the historic residential tree-lined roadways of Mercer Street and 10th Avenue on Seattle's Capitol Hill. The warm, sophisticated interior showcases Brazilian cherry hardwood floors and a top-of-the-line kitchen featuring sleek cherry cabinets with under-cabinet lighting, a

slab granite countertop with full-height backsplash and premium stainless steel appliances from Viking, Fisher Paykel and Bosch. Additional touches include prewiring for a home theater with surround sound. Slip into your oversized soaking tub, or relax on your deck while enjoying the views of Capitol Hill. Brix also offers a grassy tree-lined courtyard with a

trickling fountain, as well as a rooftop patio with gas grill and views of the Olympic Mountains, Puget Sound, downtown skyline and surrounding neighborhoods.

PRICE

Home 324 is priced at \$659,990. Other homes are priced from the low \$300,000s to the \$700,000s.

SEE THIS HOME

The presentation center and model home are open daily from 11 a.m. to 6 p.m. at 536 Broadway E. in Seattle. For more information or to schedule a private showing, call 206-262-9416 or visit www.brixcondos.com.