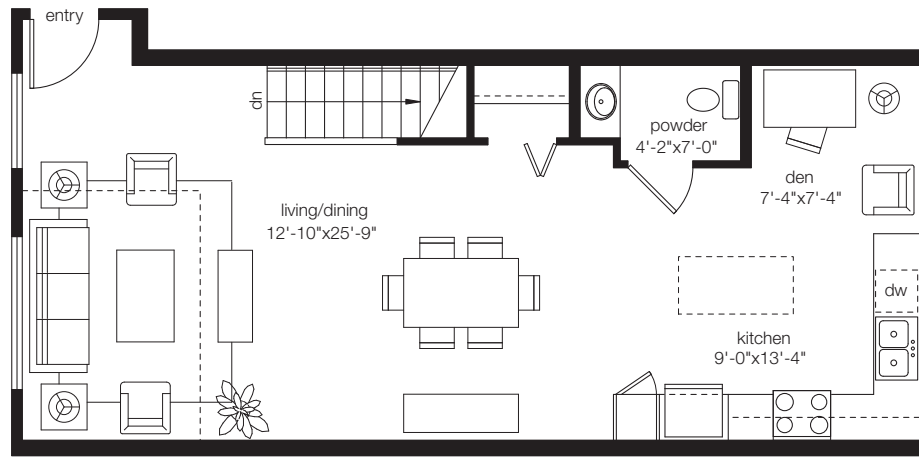


olive 3a

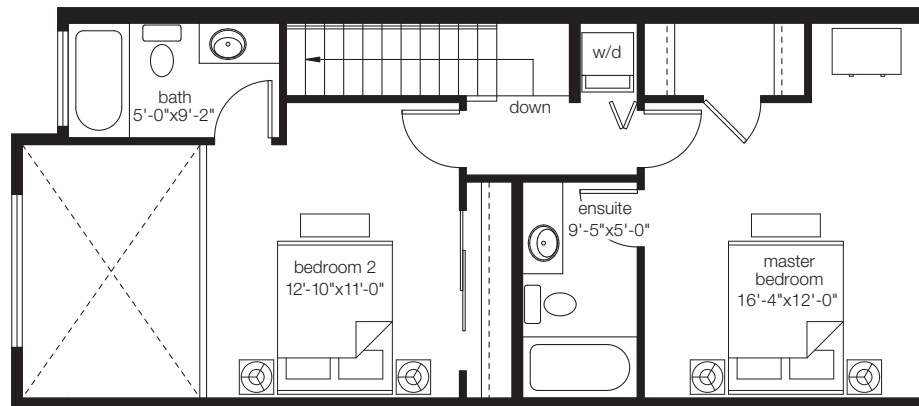


olive series

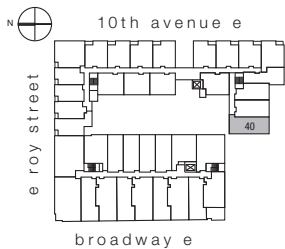
2 bedroom / 2.5 bath + den, 2 story loft, approx. 1,201 sf



lower level



upper level



tenth avenue e  
floor 2: 240

700 broadway avenue east, seattle, wa 98102  
p (206) 262-9416 w brixcondos.com



In an effort to improve its product, the proposed development continues to evolve and the developer reserves the right in its sole discretion to make changes or modification including but not limited to the floorplans, elevations, plans, maps, specifications, materials, features, colors and prices without notice. All floorplans, maps, plans, landscaping and elevation renderings are artist's conceptions and are not necessarily to scale. Square footage and dimensions are architectural approximations and subject to change without notice. T2A-1